

USER MANUAL FOR WEB INTERFACE



Contents

1. Main user interface
 - 1.1 Access main system functions
 - 1.2 Control panel
 - 1.3 Latest events panel
 - 1.4 Multiple camera thumbnails
2. Event thumbnail screen
 - 2.1 Event viewer screen
- 3 History function
- 4 Settings screen
 - 4.1 Adding contact details
- 5 Motion settings screen

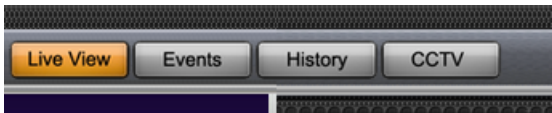
The contents of this document are protected by copyright. Do not copy or reproduce without the owners permission. Uwatchit Pty Ltd Trading As Spectur HD Security. 2013.

Patents Pending.

1. MAIN USER WEB INTERFACE



1.1 Access Main System Functions. Orange background indicates which function is active

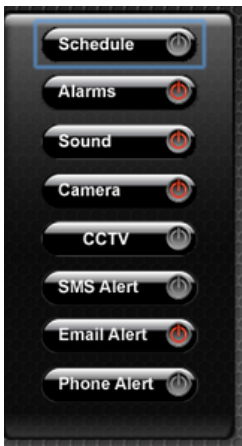


- Live View – Live feed from the selected camera
- Events – Recordings from alarm events
- History – Access all recorded and viewed images
- CCTV – Access CCTV function. Required additional Spectur hardware.



- Settings – Access system settings screen
- Log Out – Leave Spectur web interface

1.2 CONTROL PANEL – Red Indicated ON. Grey indicates OFF

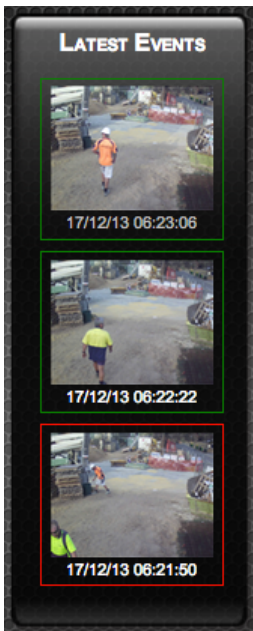


- Schedule – Enable automatic on/off times for ALARMS
- Alarms – Activate to ARM the cameras alarm and recording functions
- Sound – turn camera audio alerts on and off
- Camera – turn camera feed on and off
- CCTV – Enable CCTV recording. Requires additional hardware
- SMS Alert – SMS alerts on and off
- E-Mail Alert – E-mail warnings on and off
- Phone Alert – (NOT FUNTIONING AT PRESENT).

1.3 LATEST EVENTS PANEL

The most recent alarm events are shown here. A GREEN border indicated that the EVENT has been viewed. A RED border indicates that the EVENT has not been viewed.

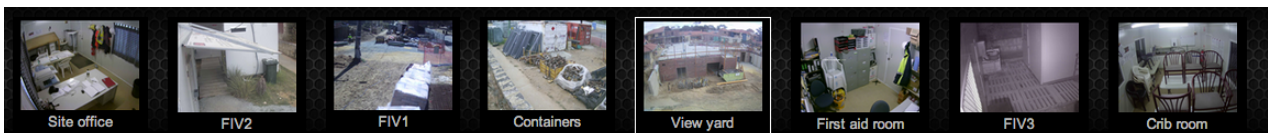
Double click the THUMBNAIL to launch the EVENT VIEWER.



1.4 MULTIPLE CAMERA THUMBNAILS

Each of these thumbnails represents a live camera.

Double click on the CAMERA THUMBNAIL to bring the cameras LIVE FEED into the VIEWING WINDOW.

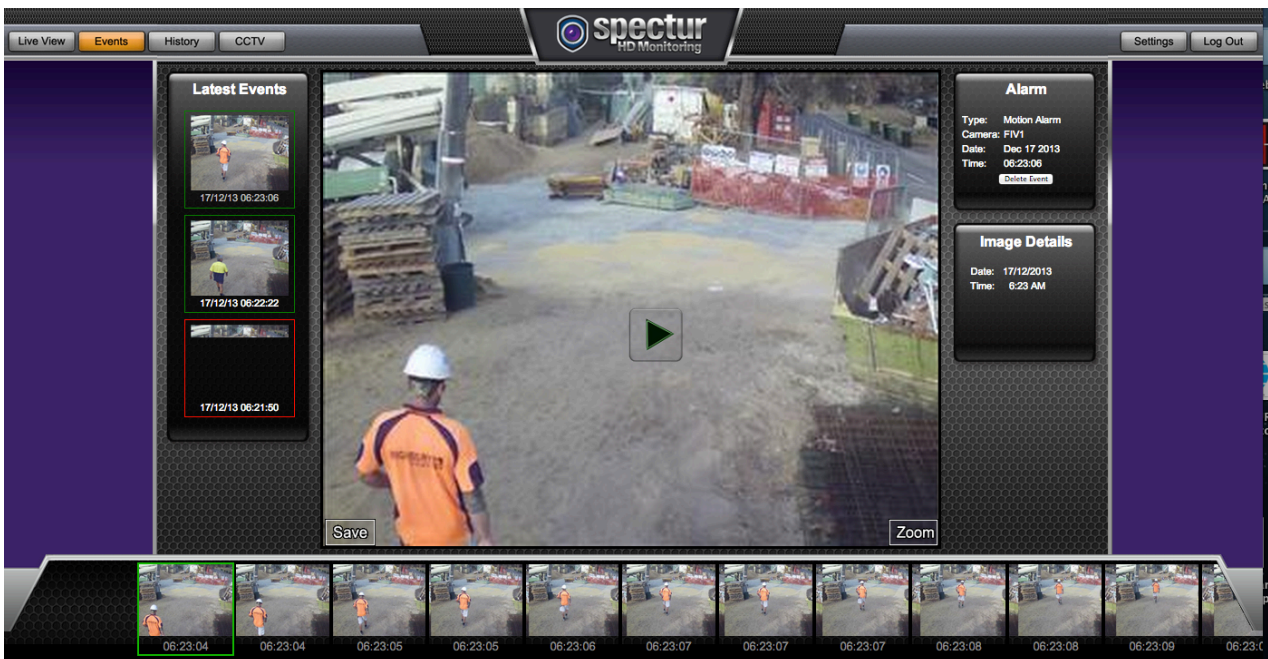


2. EVENT THUMBNAIL SCREEN

This shows all stored EVENTS. Double click to access the EVENT VIEWER SCREEN



2.1 EVENT VIEWER SCREEN



Captured images show in the Filmstrip.

Click the PLAY ARROW to see event animated.

Click the PAUSE button to stop the replay.

Click individual THUMBNAIL images to view in the main screen

To save bandwidth, all event images are shown in LOW RESOLUTION.

Click the ZOOM button to download the full HD image.

Click the SAVE button to download the full size image to your computers hard disk.

3. HISTORY FUNCTION

Every image that you view in LIVE VIEW, as well as all events are stored on our cloud server.

If you need to get specific images, from a particular camera in a given date and time range you can use the HISTORT function.



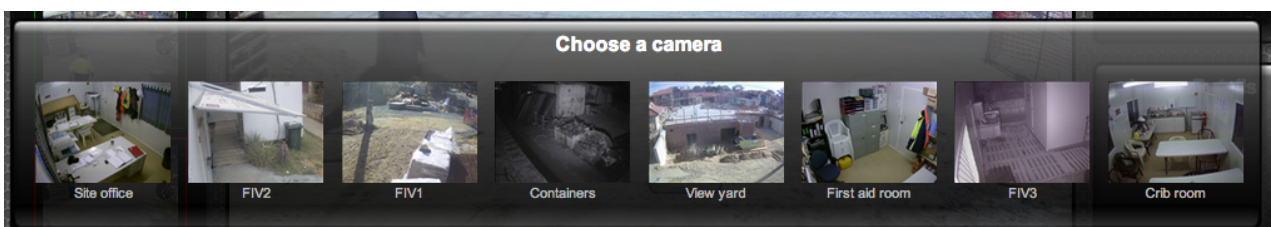
When you click the HISTORY button, you are taken to the HISTORY screen. Thumbnails from your first camera are displayed.

Click on the THUNBNAIL to bring it into the main viewing window.

Click the PLAY button in the middle of the screen to start cycling through the images.

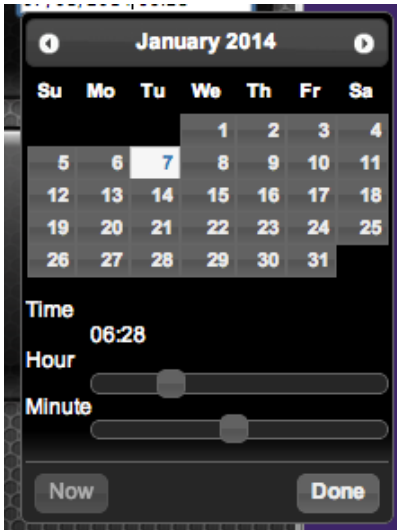


To select a different camera click on the CHOOSE CAMERA button.



Once you have selected the desired camera, click on the date and time panel. This box will appear.

Use the calendar and time slider to select desired range. Click DONE.



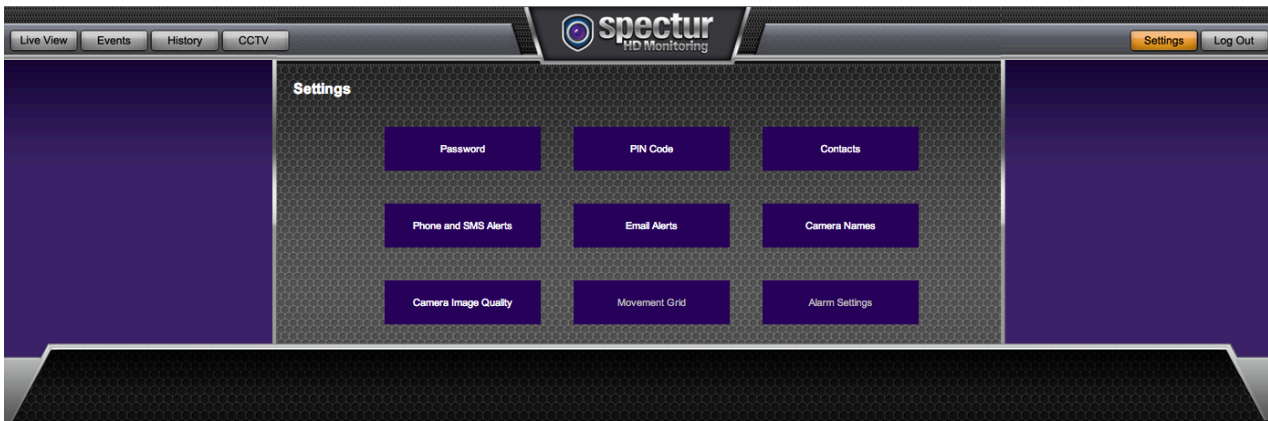
List of appropriate THUMBNAILS will appear.



Use the MORE IMAGES arrow at either end of the THUMBNAIL bar to retrieve more images.

4. SETTINGS SCREEN

From here you can control a wide range of settings.



Password – Change your web login password

PIN Code – Change your smartphone login PIN number

Contacts – Add up to 6 contacts. These are displayed in the Smartphone contacts screen

Phone and SMS Alerts – Insert the numbers you want contacted.

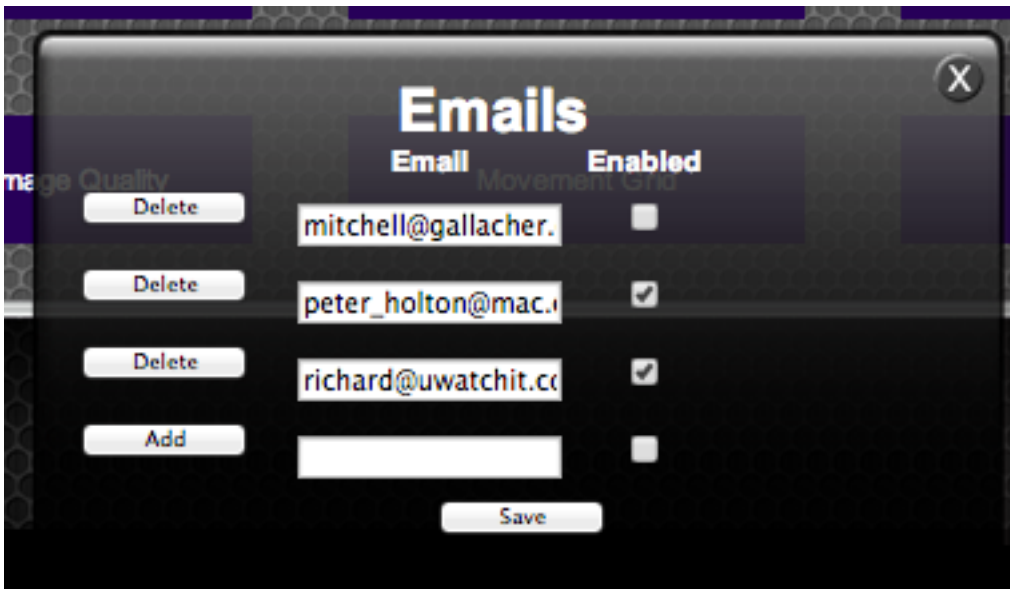
Email Alerts – Insert the e-mail addresses you want contacted.

Camera Names – Give camera your own name

Camera Image Quality – Select cameras and quality you would like to see in LIVE VIEW

Movement Grid and Alarm Settings – Use to hatch out areas that you don't want to trigger alarms. Trees, bushes etc.

4.1 Adding Contact Details



Add the recipients details.

Click the ADD button, then click the SAVE button

Click on ENABLE box. A blue tick will appear. Click SAVE.

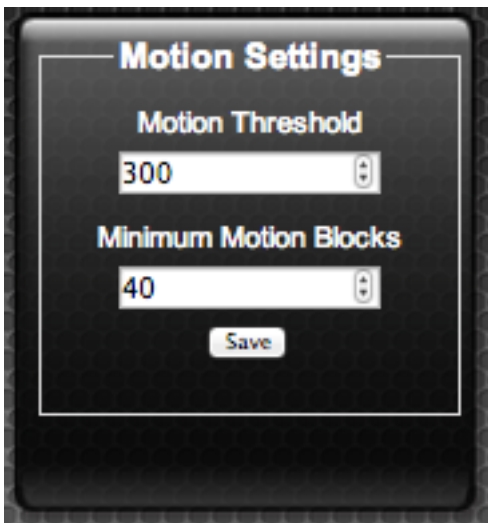
5. MOTION SETTINGS SCREEN



Choose the desired camera from the THUNBNAILS.

GREEN squares indicate ACTIVE pixels. Movement in these areas will trigger alarms.

To TURN OFF individual pixels, click them. They will turn GREY, indicating that they are INACTIVE.



Motion Threshold - changes the sensitivity of the alarm system. 100 high sensitivity. 900 very low sensitivity. We generally start with a setting of 200.

Minimum Motion Blocks – The number of pixels that need to be activated to trigger an alarm.

Please discuss these settings with your installer.